

# Mini LED Display User Manual

Thank you for choosing our products!

## 一： LED Name badge Specifications:

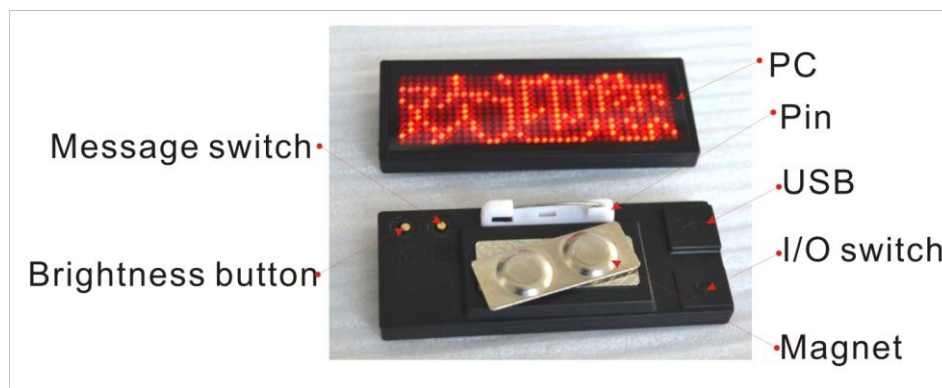
Our specifications as below:



(all can be changed by car used for 12V)

## 二： Detailed instructions:

1: Product illustrations



2.: Packing list:

Components	Qty
(Led name tag)	1 pcs
(charger)	1pcs
(cable)	1pcs
(CD disc)	1pcs

### 三： LED Desk board <SMD Series> Specifications:

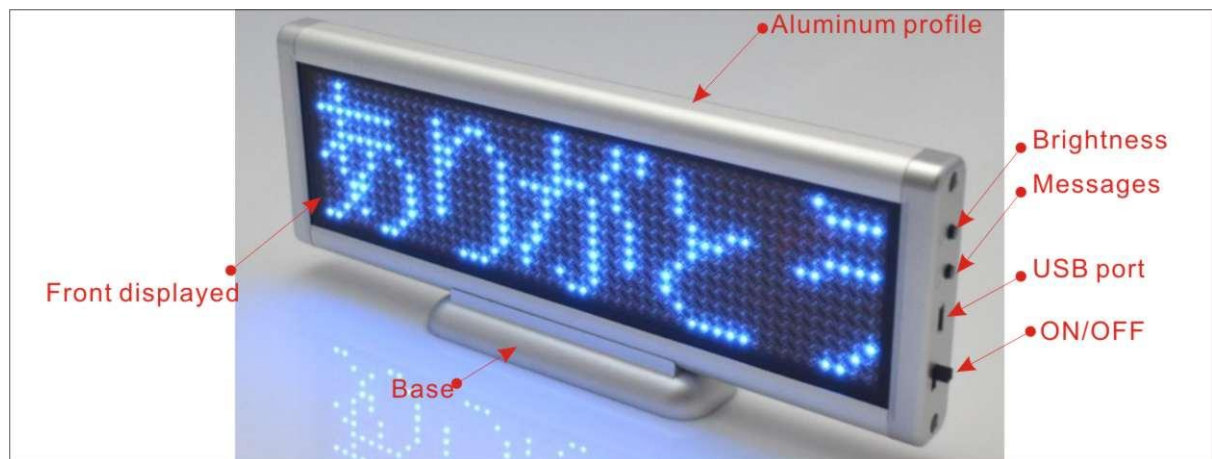
Our specifications as below:

LED台式屏 / LED Desk Board		COLOR " red/blue/yellow/green/white/pink	
	<b>B1664</b> SIZE: 220*76*18mm		<b>S1664</b> SIZE: 260*112*22mm
			
	<b>B1696</b> SIZE: 320*76*18mm		<b>S1696</b> SIZE: 360*112*22mm
			
<b>B16128</b> SIZE: 420*76*18mm	<b>S16128</b> SIZE: 460*112*22mm		
			
<b>Triangle</b>	<b>ONE SIDE DISPLAY / TWO SIDE DISPLAY</b>		

(all can be changed by car used for 12V)

### 四： Detailed instructions:

1: Product illustrations



2: Packing list:

Components	Qty
(Led desk board)	1 pcs
(charger)	1pcs
(cable)	1pcs
(CD disc)	1pcs

五： LED Display board <Module Series> Specifications:

Our specifications as below:

LED  
DISPLAY  
BOARD

LLD400 LED DISPLAY BOARD

Color:R, B, Y, G, W, RGY, RBP

C1664



LLD400-C1664 SIZE:300\*110\*22mm

C1696



LLD400-C1696 SIZE:430\*110\*22mm

C16128



LLD400-C16128 SIZE:560\*110\*22mm

(all can be changed by car used for 12V)

四： Detailed instructions:

1: Product illustrations

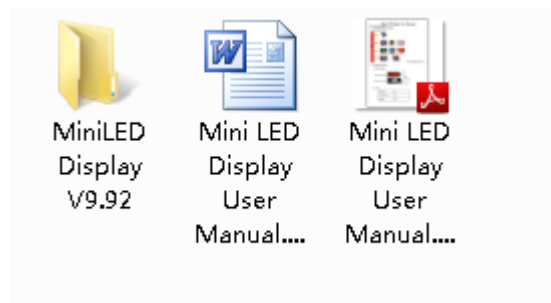


2.: Packing list:

Components	Qty
(Led desk board)	1 pcs
(charger)	1pcs
(cable)	1pcs
(CD disc)	1pcs

### 三: Driver software installation and operation:

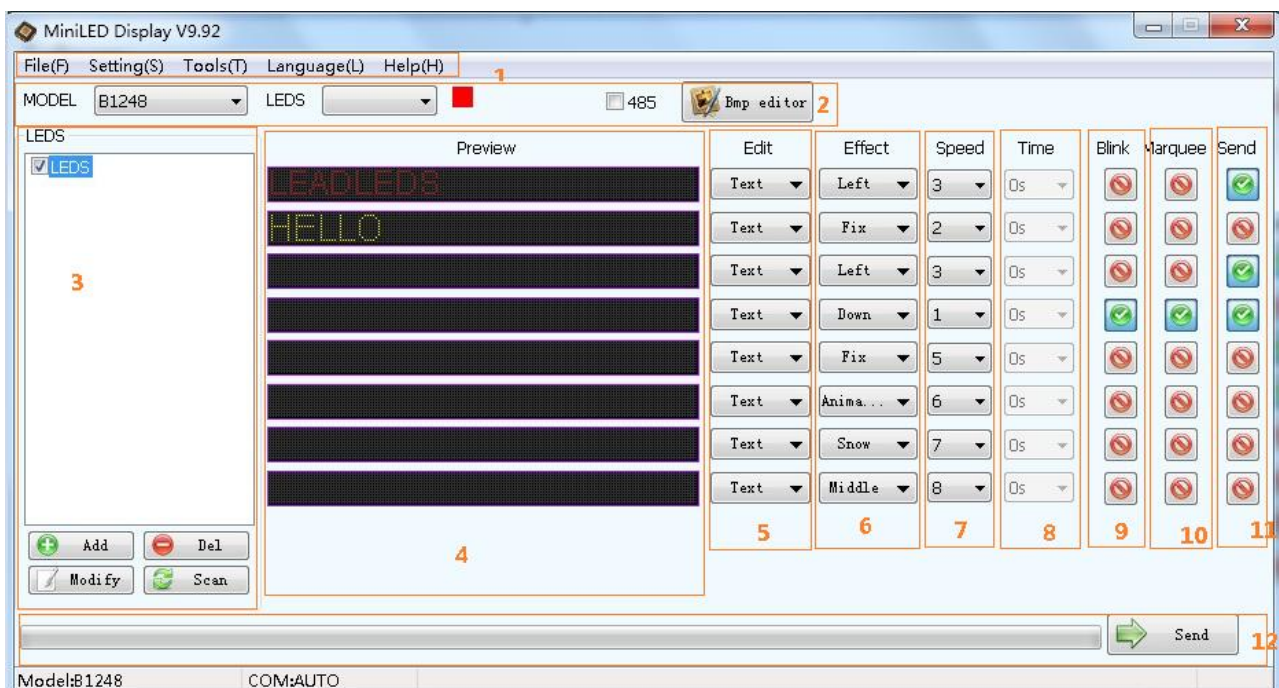
Step 1: Insert the Driver and Utility CD into CD drive, below files will be found



Step 2: Please click the “Mini LED Display”, install the software in your computer directly, then open it



Software :



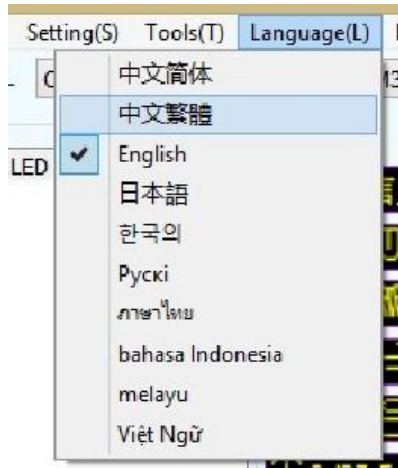
△ Introduction of Editing Software (Attention: the above picture will be your reference)

1. Menu Bar:file, setting, tools, language, help.
2. Setting Bar:choose your model, COM Port, check time, edit pictures.
3. 485 Bar:485 control need.
4. Preview:preview the messages.
5. Program selection and edit or program types: BMP, TEXT, TIME, IMAGES...
6. Action program defined: move left, move right, move up, down, snow, middle, snow, animation...

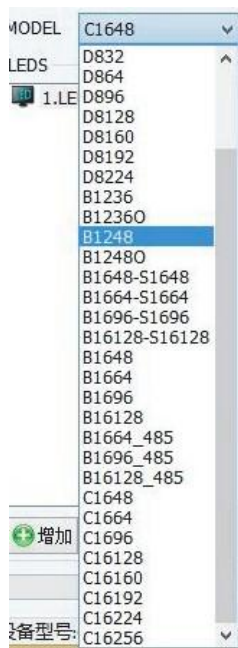


7. speed:1-8 are optional
8. time speed:0-5s optional.
9. Blink:Blink display the message.
10. Marquee:the message add marquee display.
11. In the “Send” column, when click on and show green .it means sending.
12. After click “Send” , the program will show in the display.

Step 4: Please click the “language”, displayed your software language:



Step 5: Please choose the “Model”,

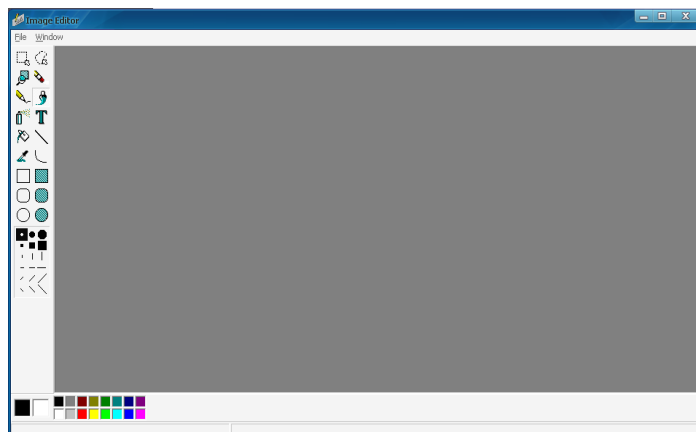


Step 6: Turn on the led display, and connect USB cable, **Com** sign will be detected and show up, also you can check it manually: right” Click→property→hardware→ Device manager:

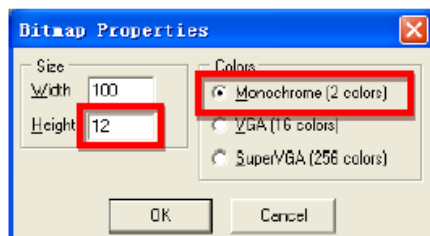


Step 7: input your message, click send!

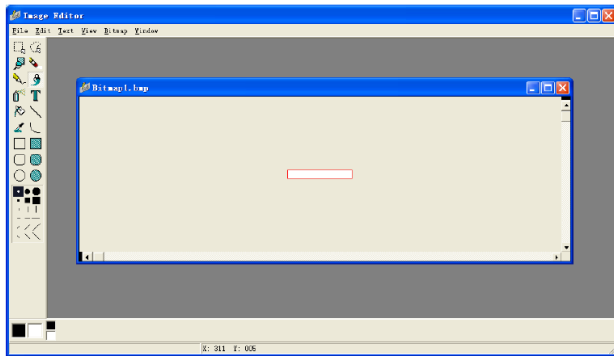
If you want to input or edit image or animations, please follow below steps:  
click “edit image”, see as below:



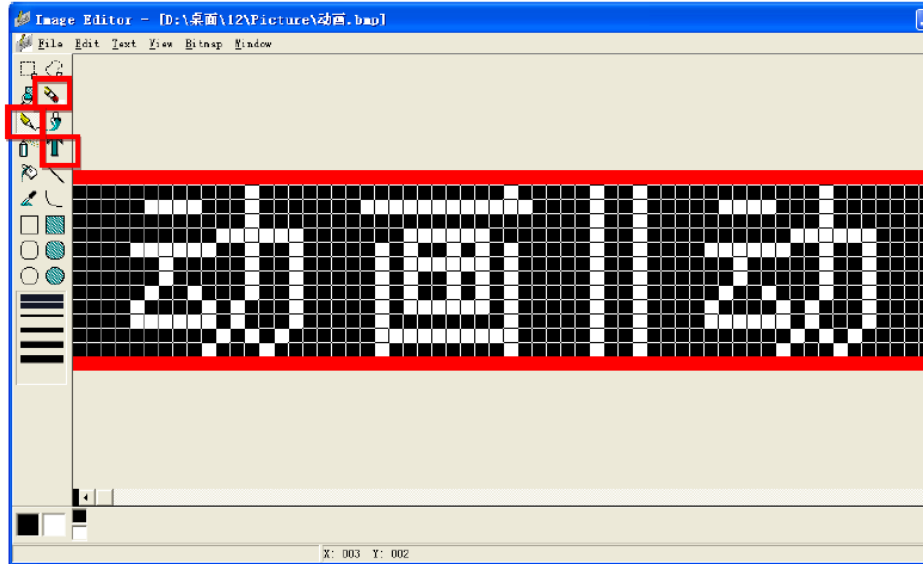
Click “File” -> “New”, start a new image



Set “Height” 12, and color “monochrome”, then click “OK”



And then the image can be zoomed, choose “View” -> **Zoom In** or “**Ctrl+I**”



Click **red paint** or **eraser** icon, and use right or Left key of mouse for paint white or black, save as BMP file after finish, then can be applied with the program.

#### 四： How to charge for Mini LED Display?

It requires recharge when the power is running out or brightness reduced obviously. Please follow below steps: Turn off Led name tag, connect charger and data cable, Indicator lamp lighted; capacity will be full after about 4 hours, and the battery will automatically shut down if it does not to be disconnected.

#### 五： Common questions

- 1、 What should we do if computer alarmed with “troy’ s virus” ?  
This case is only happened when you computer is installed with “360 virus killer” software, please chose trust this program then continue.
- 2、 What should we do if the com interface does not show up after led name tag installed with computer?  
Check if the driver software is installed properly, and if it is first time install driver software, please re-connect data cable and let it install automatically
- 3、 What should we do if the program is jammed or shut down?  
Please make sure all content has to be sent completely before pulling out the mini led display.

4、What should we do if Chinese characters do not be displayed completely when display with rolling subtitles?

Mini led display with 12 rows dots Pixels takes the top and bottom line when display rolling subtitles, we can change the form of Chinese characters as image form, then set it display with 10 rows only.

5、Is the same driver software used for both Led name tag (badge)and led desk board?

Yes, same driver software is used for all of our products, only you have to do is chose properly model

Thank you for **choosing** our product, and if you have any further questions of usage, please contact our technicians